



LATITUDE	LONGITUDE	ELEVATION
N37°09.09'	W107°45.23'	6685' MSL

**Navigation**

VOR	GPS	ILS
108.2 (DRO)	RWY 02	RWY 02

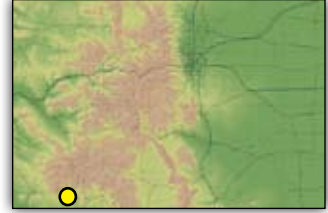
**Runway Data**

Runway	Length	Width	Surface	Lights	VGSI	App Lgts
3/21	9201'	150'	ASPH	HIRL	V4L/V4L	MALSR/REIL

**Communications**

CTAF/UNICOM	Lights	Weather	ATIS	APP/DEP	Tower	Ground	RCO
122.8	122.8	ASOS 120.625 970-259-3579	--	118.575	--	--	122.35

CONTACT INFORMATION	
Manager:	RON DENT
Airport Phone:	970-382-6050
After Hours Phone:	NONE
Website:	www.flydurango.com



SERVICES			
Airframe:	<b>MAJOR</b>	Bottle Oxygen:	<b>LOW</b>
Power Plant:	<b>MAJOR</b>	Bulk Oxygen:	<b>NONE</b>
TSNT Storage:	<b>HANGAR, TIEDOWN</b>	Fuel:	<b>100LL, JET A</b>
Transportation:	Avis 970-247-9761, Budget 970-259-1841, Hertz 970-247-5288, National 970-259-0068, Enterprise 970-385-8648.		
Other Services:	Air Freight, Air Ambulance, Charter, Instruction, Aircraft Rental, Aircraft Sales.		

COMMUNITY			
Lodging:	Double Tree		970-259-6580
	Mariott Residence Inn		970-259-6200
	Strater Hotel		970-247-4431
	Hampton Inn		970-259-2600
Dining:	Durango Deli	Airport Terminal	970-259-6964
	Restaurants in Durango	15 miles NW	
Recreation:	Mesa Verde National Park	50 miles W	
	Purgatory Ski Resort	40 miles NW	
	Silverton Narrow Gauge Train	15 miles NW	
	Vallecito Lake	20 miles N	

**REMARKS**

- No night snow removal provided.
- Prior permission required for air carrier operations with more than 30 seats.
- Contact airport management at 970-382-6050 for more information.



© 2002 DeLorme (www.delorme.com) Topo USA®